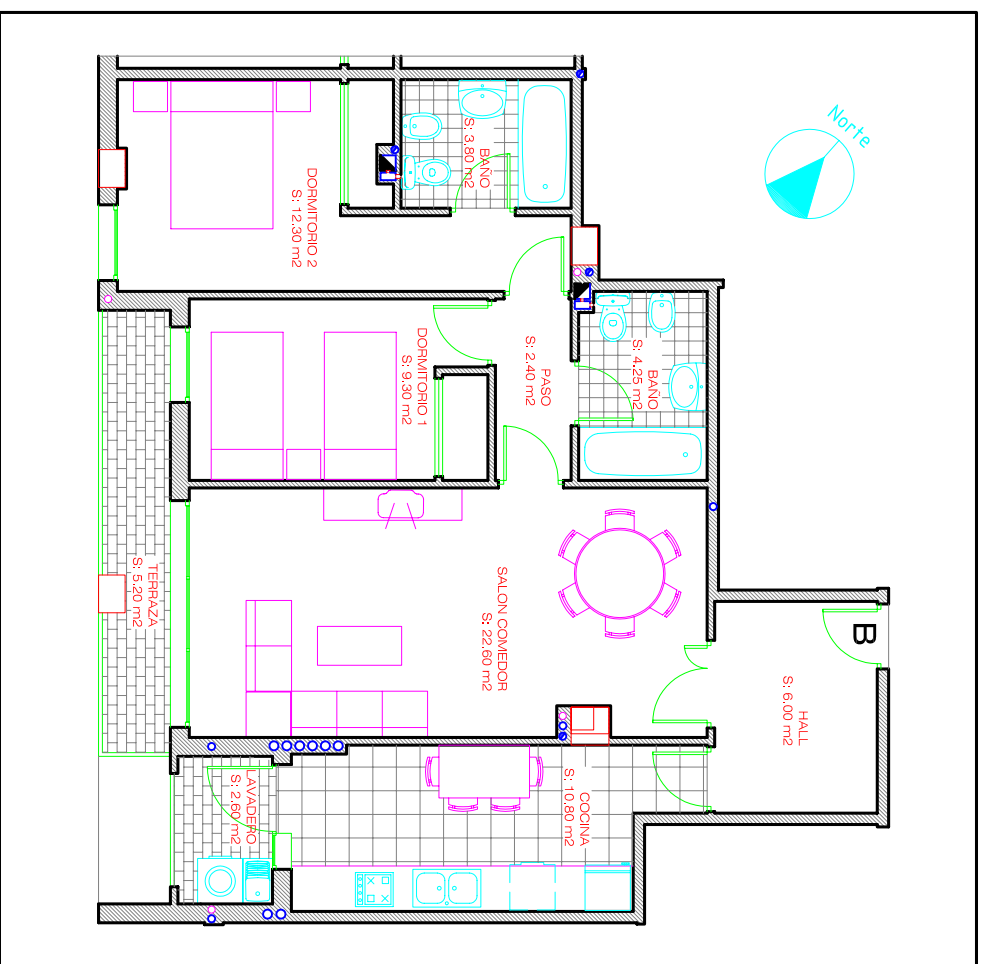
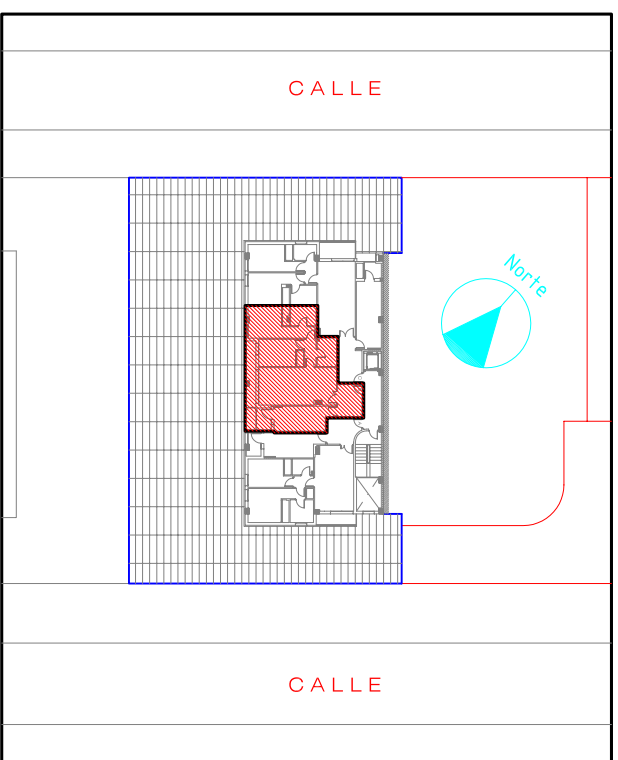
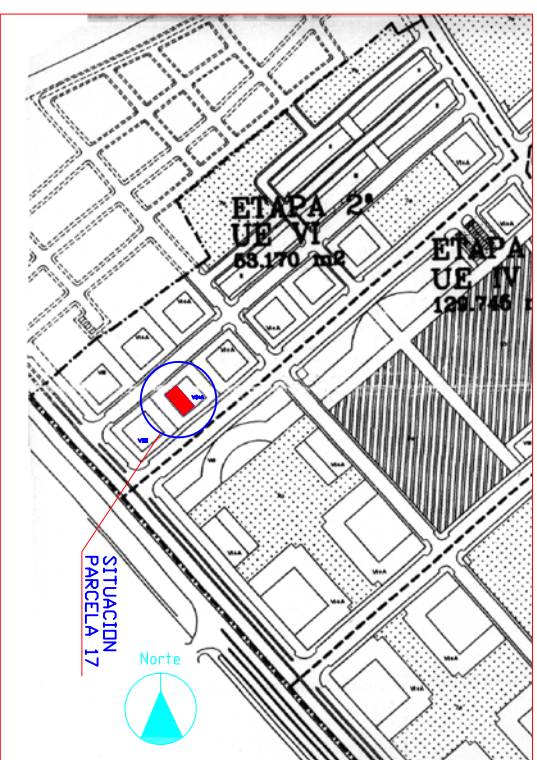


SITUACION:



PLANTA QUINTA " VIVIENDA TIPO B"

ESCALA 1/100

SUP. CONST. + ESP. COMUN 98,04 m²
SUP. UTIL 79,25 m²

17 VIVIENDAS, LOCALES, TRASTEROS Y GARAJE
U.E. VI P.P. CR-5, PARCELA 17, MANZANA E2. MURCIA

PROMUEVE: EUSEBIO ABELLAN S.L.

ARQUITECTO: NICOLAS E. CARAZO DIAZ